



# Music Extra Curricular Activities 2016/2017



## A note from Helen Turnbull—Director of the Arts Specialism

Welcome to the Music Department at Netherhall Learning Campus. As you read through this booklet, you will be able to see the activities on offer to all pupils and what time, day and room they take place in.

All activities are run by experienced staff and tutors, from within the High School and Kirklees Music School.

Activities are open to ALL students from year 7 to year 13

### Department staff:

Helen L Turnbull—Director of Specialism/Liaison Manager/  
Senior Teacher

Alli Bell—Teacher of Music, and Steel Pans

Killian Kilduff—Teacher of Music

Richard Sellars—Teacher of Music/Head of Year 8

*If parents have any questions regarding the music activities, or would like you child to have instrumental or vocal lessons, please contact Helen Turnbull, The Director of the Arts Specialism on 01484 221892.*

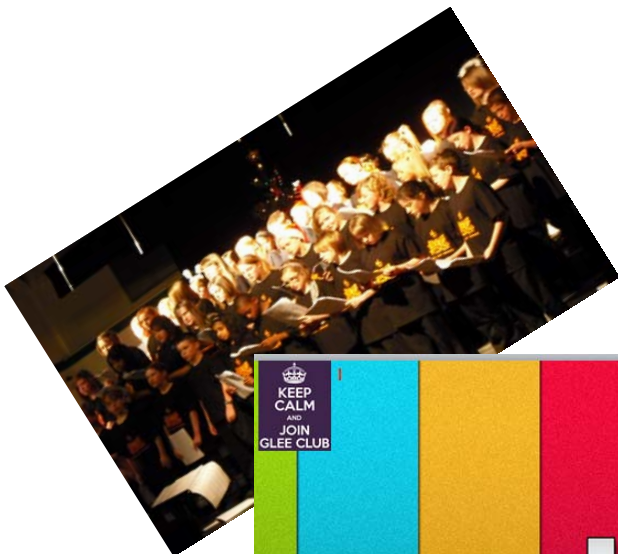
## Choir - Glee @ NLC in MU1

Tuesdays and Thursdays 2:50pm-4pm

The Choir (recently renamed Glee@NLC) is made up of pupils from every year group in the school. They perform a wide range of music, from current R'n'B chart hits to classic rock and pop tunes. The pupils often help us to choose the songs that they want to sing.

The Choir also forms the main chorus for the annual school show.

Don't worry if you can't make every day, or if you have to leave early/pick siblings up from the Juniors or you also do a PE activity etc. We can always work something out. We don't mind you bringing your little brothers and sisters to the rehearsals if necessary! Just let us know if there is a problem and we'll sort something out.



**KEEP CALM AND JOIN GLEE CLUB**

**Music 1 on Tuesdays & Thursdays  
2.50pm to 3.45pm**

**glee**  
**@NLC**

GLEE@NLC will be starting again on Tuesday  
24.3.15

We are looking for people who like singing and performing. **EVERYONE IS WELCOME.**

Do you want to learn to play Drums, Keyboard, Guitar and Bass Guitar and perform in a Pop Choir?

**KEEP CALM AND JOIN GLEE CLUB**

## Steel Bands in Steel Band Room

Each year group has a steel band.

They rehearse before school and play a range of music. The steel bands perform in the Christmas Concert, Community Concert and events such as the Caribbean Evening.

Year 8 - Monday 8:30am

Year 10/11/12/13 - Tuesday 8:30am

Year 7 - Wednesday 8:30am

Year 9 - Thursday 8:30am



## Wind Band in Drama 1

Wednesday 8.30—9.05am

All brass and woodwind players are expected to take part in Wind Band. The band plays a wide range of pieces, and is growing each year. Members work on their parts in their lessons and then come together to rehearse on a Wednesday before school.

They also perform at school events. These performances can form part of the BTEC/GCSE Music courses.

## Samba Band

Wednesday 2:50—3:50 in MU1

Samba takes place every Wednesday after school. Members work on rhythm pieces and coordination in addition to some display drumming. It is a great opportunity to learn a new instrument whilst making new friends. Samba Band also perform at school events and festivals.



## School Show

Wednesdays 2:50pm-4pm (in addition to Choir on Tuesdays and Thursdays)

Every year NLC produces a school show. In the past, these have included High School Musical, Hairspray, Grease, Joseph and the Amazing Technicolor Dreamcoat, West Side Story and the Wizard of Oz.



This is a great opportunity for lots of pupils from all year groups to work together to produce a fantastic show. Many of the BTEC/GCSE courses pupils are assessed on their contribution as part of the course.

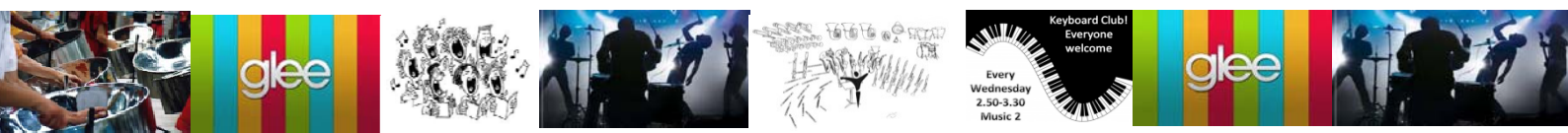
The Choir forms a large part of the cast, but auditions are held for the main roles.

This year's auditions will be held during the week beginning 1st October (further details will follow). To be a part of the show, pupils must attend the other Choir rehearsals on Tuesdays and Thursdays as well, as we work on a lot of the show material during these times.

## Rock School Night

Every Wednesday 2.50pm—3.50pm in Mu1

Rock School Night is for any student in ANY year group to come along and work with staff and other students to develop the skills to be in a Rock Band. This means they can try out on a variety of instruments including, Drums, Keyboard, Electric Guitar, Bass Guitar or just learn how to use the Recording Studio.



# Music Extra Curricular timetable 2016 2017

## Monday

Year 8 Steel Band	8.30am – 9.05am	Steel Pan Room
GCSE/BTEC LEVEL 3 Rehearsal time	8.30am – 9.05am	See Ms Turnbull for room access
GCSE/BTEC LEVEL 3 Rehearsal time	2.50pm – 4.00pm	See Ms Turnbull for room access

## Tuesday

Year 10/11/12/13 Steel Band	8.30am - 9.05am	Steel Pan Room
GLEE@NLC/School Show Rehearsal	2.50pm – 4.00pm	Music 1

## Wednesday

Wind Band	8.30am – 9.05am	Music 1
Year 7 Steel Band	8.30am – 9.05am	Steel Pan Room
'NEW' Rock School Night	2.50pm – 4.00pm	Music 1
All Year Groups		

## Thursday

Year 9	8.30am - 9.05am	Steel Pan Room
GLEE@NLC/School Show Rehearsal	2.50pm – 4.00pm	Music 1

## Friday

Year 10 Steel Band	8.30am – 9.05am	Steel Pan Room
GCSE/BTEC LEVEL 3 Rehearsal time	8.30am – 9.05am	See Ms Turnbull for room access
GCSE/BTEC LEVEL 3 Rehearsal time	2.50pm – 4.00pm	See Ms Turnbull for room access

**Don't worry about getting your mark Music Department staff will take the register!**

**YOU CAN ALSO SET UP ANY ACTIVITY YOU HAVE AN INTEREST IN, JUST SEE THE MUSIC DEPT**