

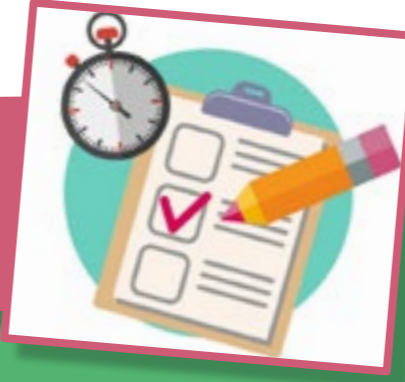
# NLC GEOGRAPHY LEARNING JOURNEY

**NEXT STEPS:**  
ONTO HIGHER EDUCATION,  
APPRENTICESHIP OR FULL TIME  
EMPLOYMENT

**GEOGRAPHICAL INVESTIGATIONS**  
Investigating the effectiveness of coastal management techniques in Robin Hood's Bay and the impact of urban redevelopment in Scarborough's North Bay.



**ISSUE EVALUATION**  
A synoptic investigation task based on pre-release material provided by AQA in March of Y11.



**GCSE GEOGRAPHY PAPER 1; LIVING WITH THE PHYSICAL ENVIRONMENT**

**GCSE GEOGRAPHY PAPER 2; CHALLENGES IN THE HUMAN ENVIRONMENT**

**GCSE GEOGRAPHY PAPER 3; GEOGRAPHICAL INVESTIGATIONS**

**RECAP, REVISIT AND REVISE**  
Looking again at the content and skills from across the course

**THE CHANGING ECONOMIC WORLD**  
How development can be measured, why differences in development exist and the social/environmental/economic impacts of economic change in Nigeria and the UK.



**LIVING WORLD**  
The world's major ecosystems and in-depth studies of tropical rainforests and hot deserts.



**URBAN ISSUES AND CHALLENGES**  
Causes and social/environmental/economic consequences of urban change in high-income and low-income countries through case studies of Rio de Janeiro and Bristol.



**PHYSICAL LANDSCAPES OF THE UK**  
Causes of fluvial, sub-aerial and marine processes, their impacts on the landscape and people of the UK and how the processes can be managed to reduce impact.



**THE CHALLENGE OF NATURAL HAZARDS**  
Causes and social/environmental/economic consequences of tectonic, meteorological and climatic hazards.



**MAPS, SUMS AND STATISTICS**  
Recapping key mapping and numerical skills and applying them to complete a decision making enquiry using UK climate data.



**URBAN ISSUES**  
Investigating the causes and consequences of urban growth in high-income and low-income countries.



**FIELDWORK INVESTIGATION**  
Exploring human impact on the local environment.



**POPULATION CHANGE**  
Investigating the causes and consequences of increasing population and migration in Europe and North America.



**DECISION MAKING ENQUIRY**  
Should road building be allowed in the Amazon?



**THE CHALLENGE OF RESOURCE MANAGEMENT**  
The issues in supplying food, water and energy to the UK and energy around the world.



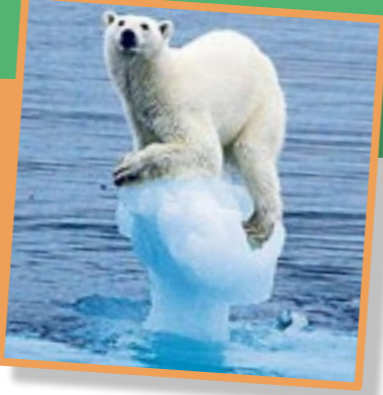
**COSTING THE EARTH?**  
The impact of increasing population & urbanisation on resources and landscapes.



**PHYSICAL LANDSCAPES OF THE UK**  
How river and coastal processes shape our landscape and affect people.



**CHANGING CLIMATES**  
How natural and human caused climate change impacts on landscapes and people.



**OUR WEATHER**  
Causes and consequences of the UK's changeable weather and an investigation into the weather around NLC.



**OUR WORLD**  
An introduction to the continents and countries of planet Earth.



**THE CHALLENGE OF NATURAL HAZARDS**  
The causes and consequences of tectonic hazards.



**OUR ISLAND HOME**  
An introduction to the human and physical geography of the British Isles.



**INVESTIGATING ASIA AND CHINA**  
A study of the human and physical geography of the world's most populous continent.



HOMework in KS3 is from a menu of tasks to allow students to reinforce and extend class-based learning through independent research and to show creativity.

YEAR 9 IS A SKILLS BUILDING YEAR WITH A PARTICULAR FOCUS ON DEVELOPING ENQUIRY, DATA HANDLING, MAPPING, DATA PRESENTATION, ANALYTICAL AND EVALUATIVE SKILLS REQUIRED FOR GCSE STUDY.

KS4 FOLLOWS THE AQA GCSE GEOGRAPHY COURSE, HOMEWORK WILL BE BASED AROUND THE SENECA LEARNING ONLINE PORTAL.

IN ALL YEARS FORMAL ASSESSMENT WILL TAKE PLACE AT THE END OF EACH UNIT WITH FURTHER, COMBINED MOCK EXAMS IN Y10 AND 11.